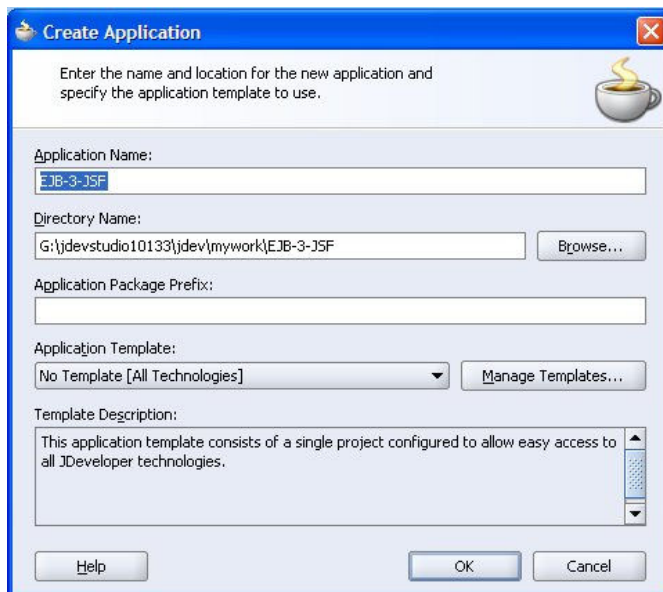
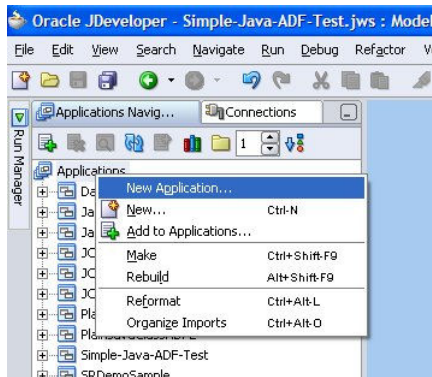


TUTORIAL: Using EJB 3.0 as a business component for ADF Faces

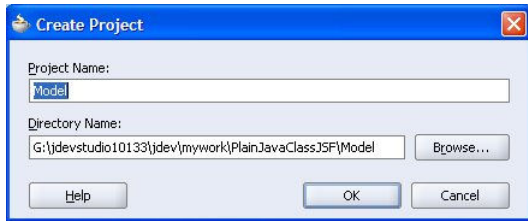
By: Dr.Ahmad Taufik Jamil, Hospital UKM

This tutorial will show how to use EJB 3.0 as a business component for a JSF page. ADF data control/binding will be used.

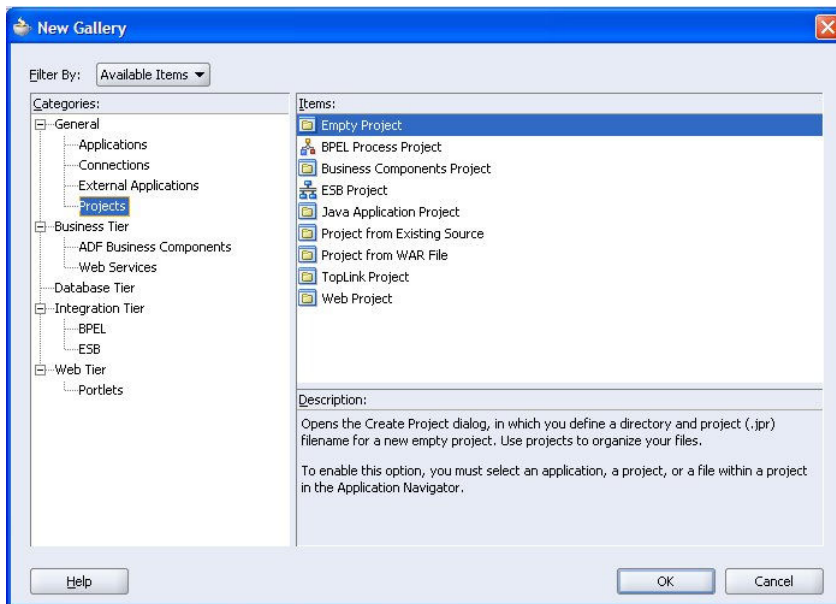
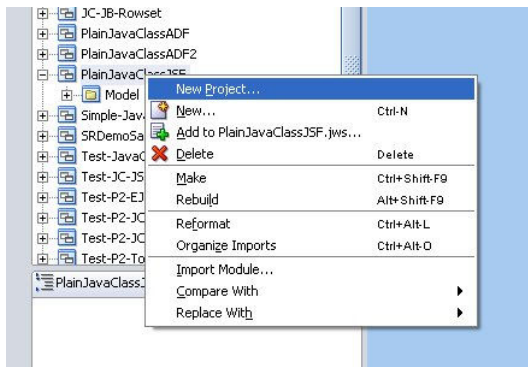
1. Creating workspace and project folder
 - a. Launch JDeveloper 10g
 - b. Create New Workspace, enter **EJB-3-JSF** for *Application Name*;, and **No Template [All Technologies]** for *Application Template*;; click **OK**.

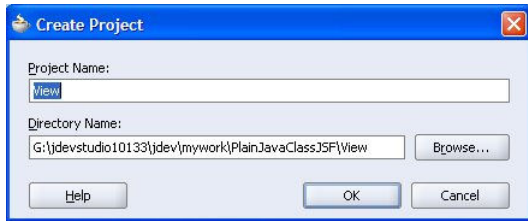


- c. Create a project folder. Enter **Model** for *Project Name*;; then click **OK**.



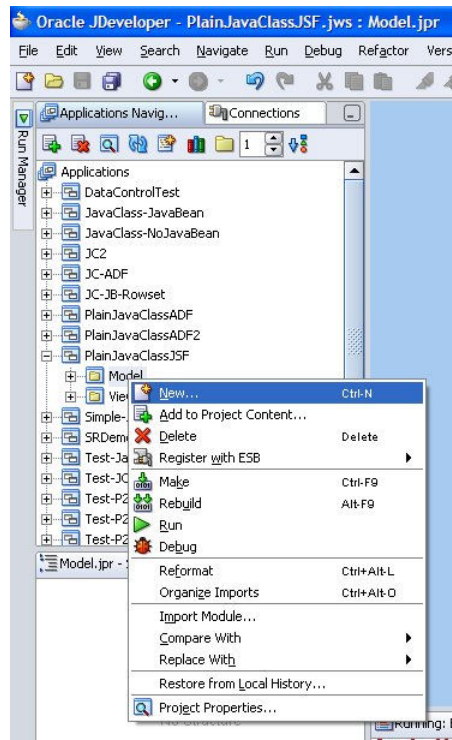
- d. Right click **EJB-3-JSF** workspace, click *New Project...*, in the *New Gallery* dialog box, click *Project (General)*, click *Empty Project* in column *Items*;, click *OK*, then, enter **View** for *Project Name*: and click *OK*.



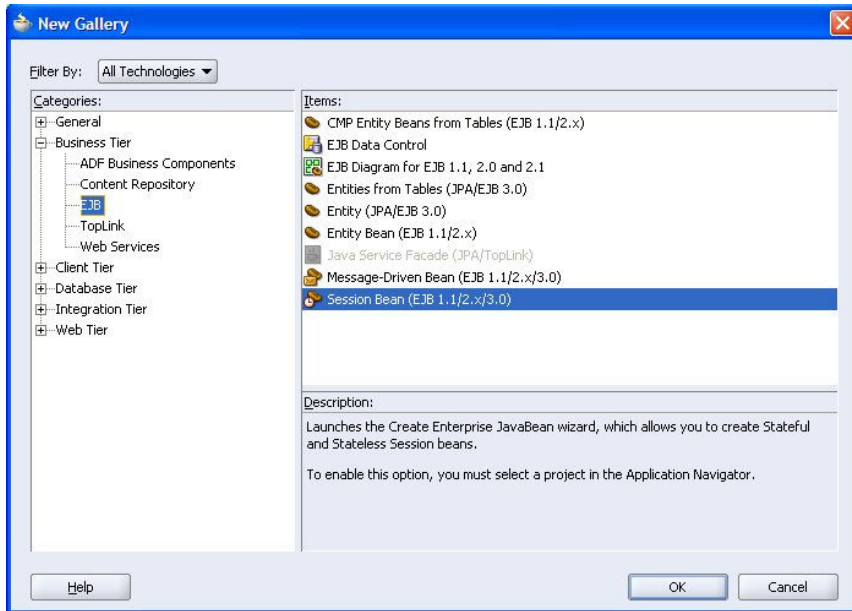


2. Creating EJB

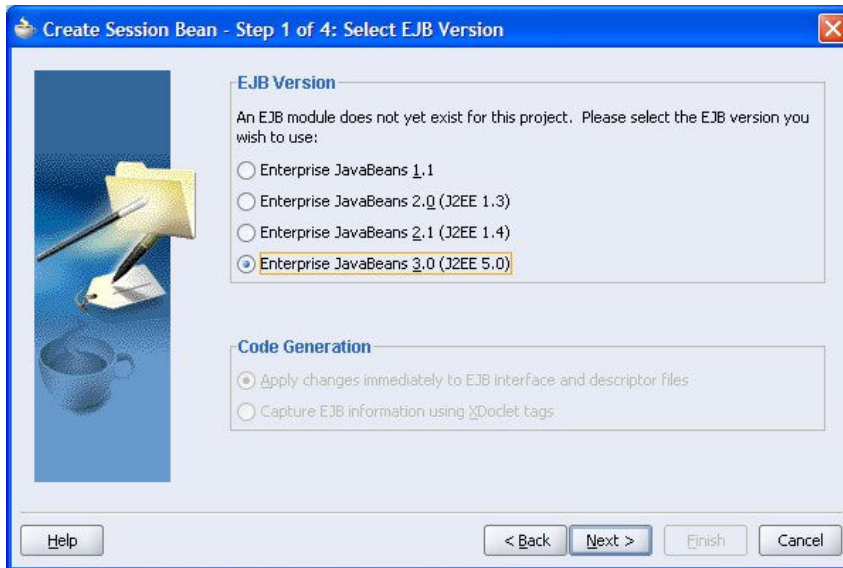
- a. Right click **Model** project folder, click *New...*



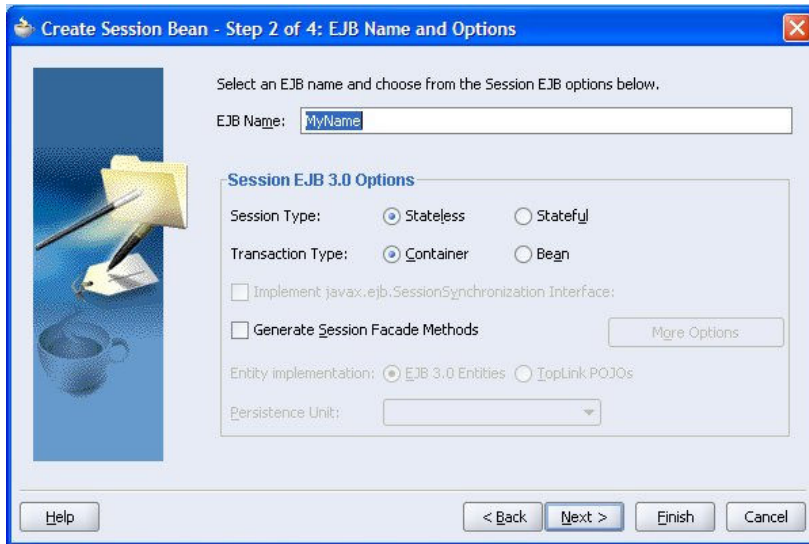
- b. In the *New Gallery* dialog box, expand *Business Tier*, click *EJB*, click *Session Bean (EJB 1.1/2.x/3.0)*, inside *Items*: column, then click *OK*.



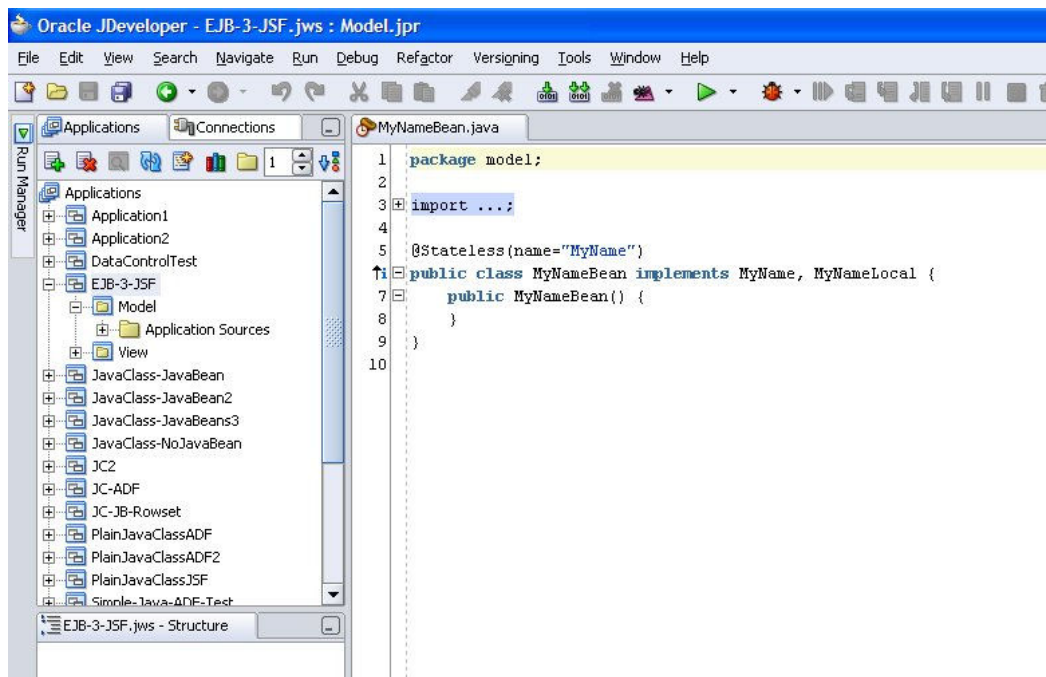
- c. Click Next on *Create Session Bean – Welcome* dialog box, in *Step 1 of 4: Select EJB Version*, choose Enterprise JavaBeans 3.0 (J2EE 5), and then click *Next* button.



- d. For EJB name, enter **MyName**. Accept all default value, click *Finish* button.



e. This is the outcome.



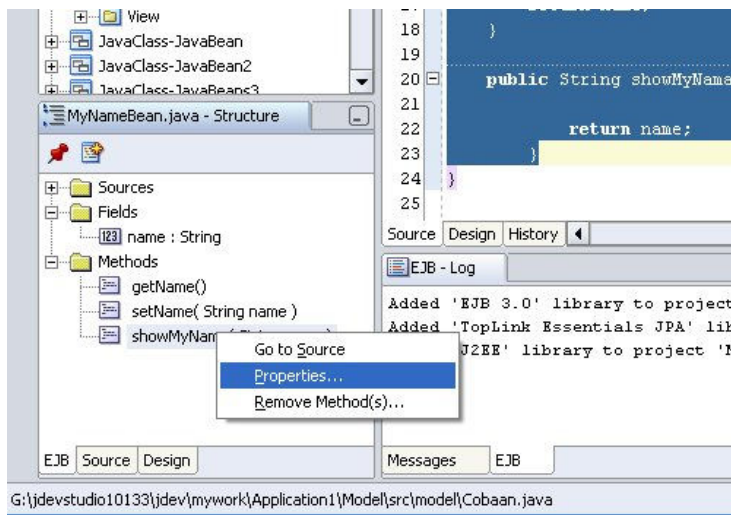
f. Enter source code below (highlighted).

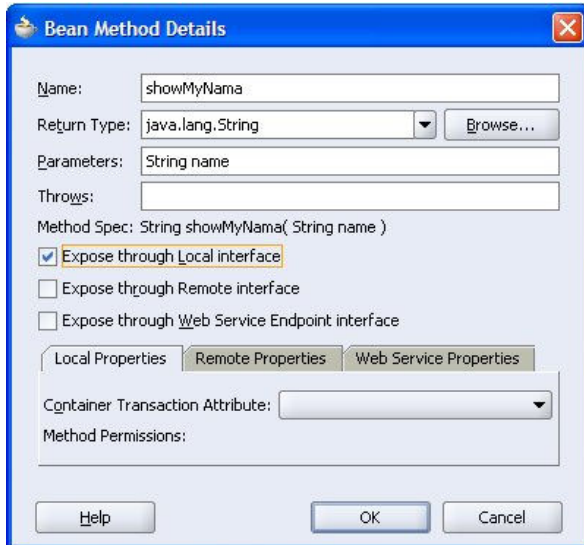
```

MyNameBean.java
1 package model;
2
3 import ...;
4
5 @Stateless(name="MyName")
6 public class MyNameBean implements MyName, MyNameLocal {
7     public MyNameBean() {
8     }
9
10    private String name;
11
12    public void setName(String name) {
13        this.name=name;
14    }
15
16    public String getName(){
17        return name;
18    }
19
20    public String showMyNama(String name){
21
22        return name;
23    }
24 }
25
Source Design History

```

- g. Add entry to local Interface. Right click at method **showMyName** at *MyNameBean.java-Structure*, at left column, click *Properties..* and check *Expose through Local interface*, then click *OK*.

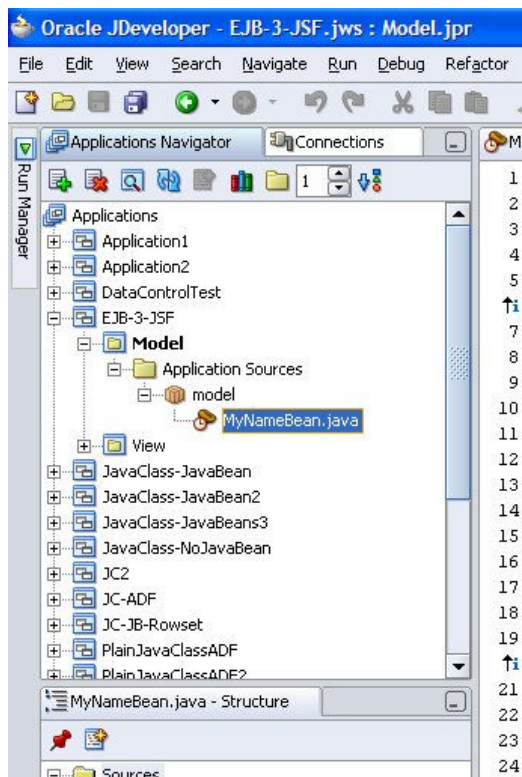




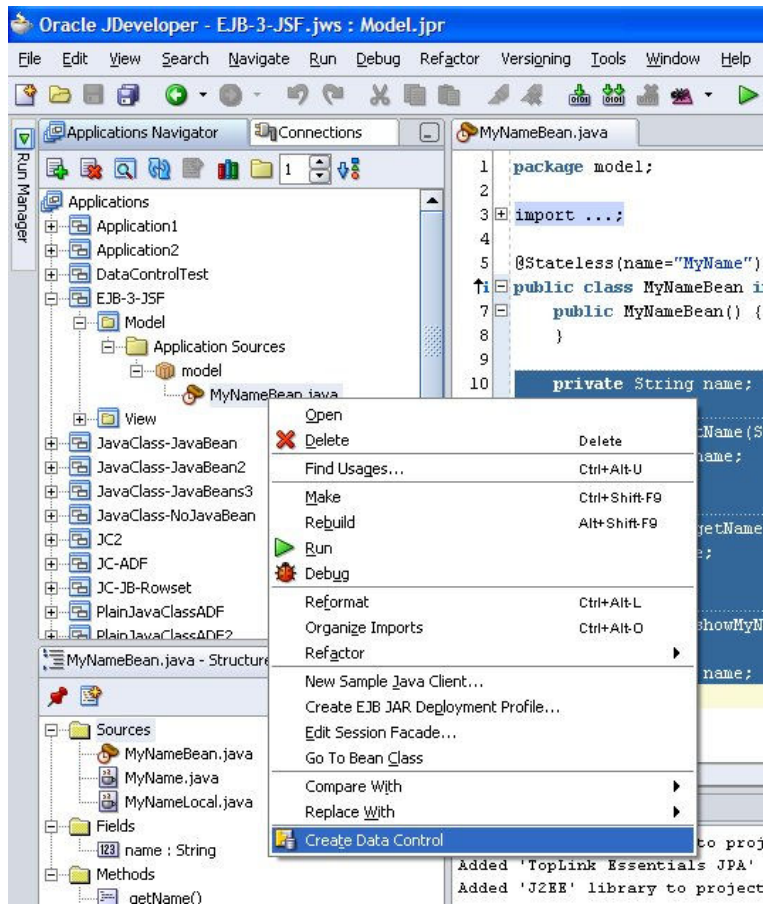
h. Compile the **MyNameBean.java** and see the output.

3. Creating data control

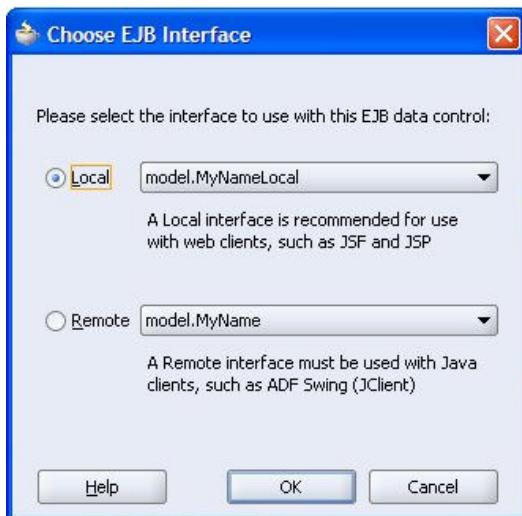
a. Expand **Model** project folder until you see **MyNameBean.java**

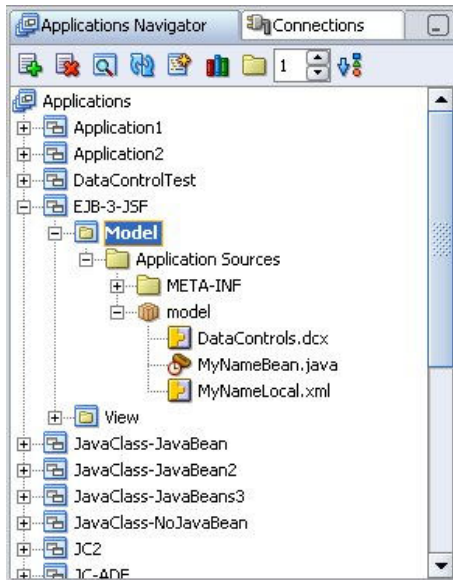


b. Right click **MyNameBean.java** and click *Create Data Control*.



c. At *Choose EJB Interface* dialog box, choose *Local* and click *OK*.

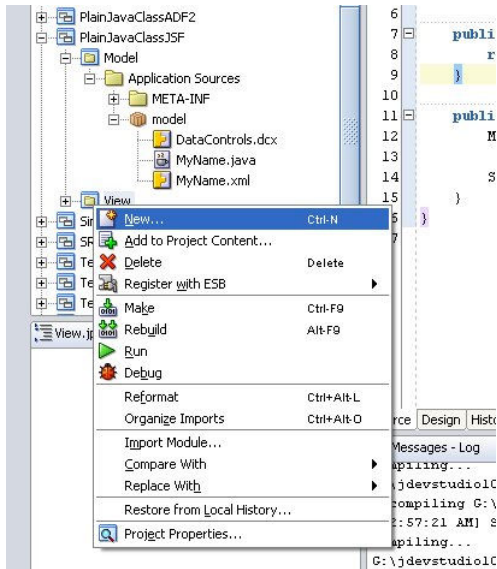




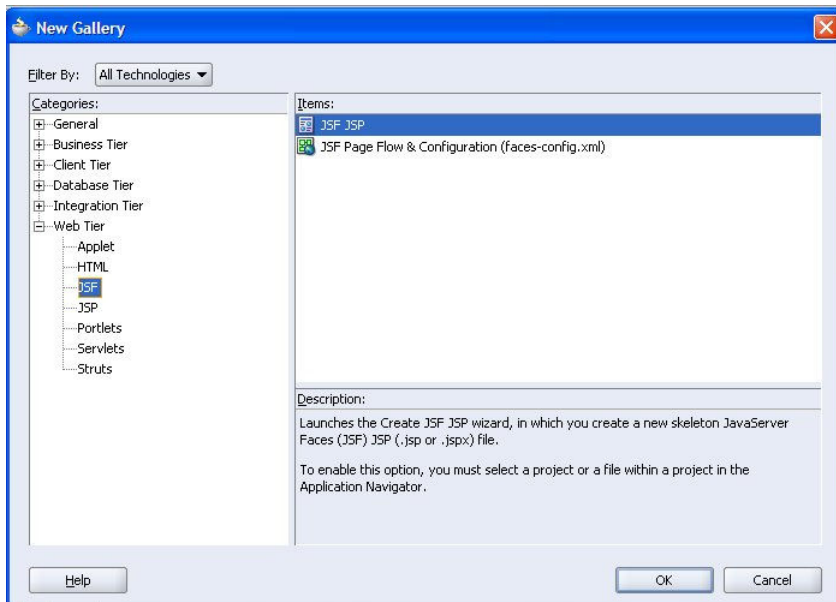
d. View the *Data Control Palette* to see the outcome.



4. Creating JSF page
 - a. Right click **View** project folder, click *New...*



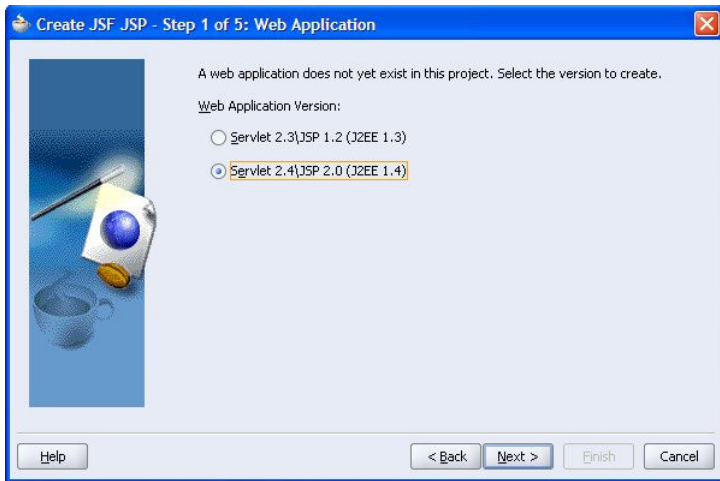
- b. In the *New Gallery* dialog box, expand *Web Tier*, click *JSF*, inside *Items:* column, click *JSF JSP*, click *OK*.



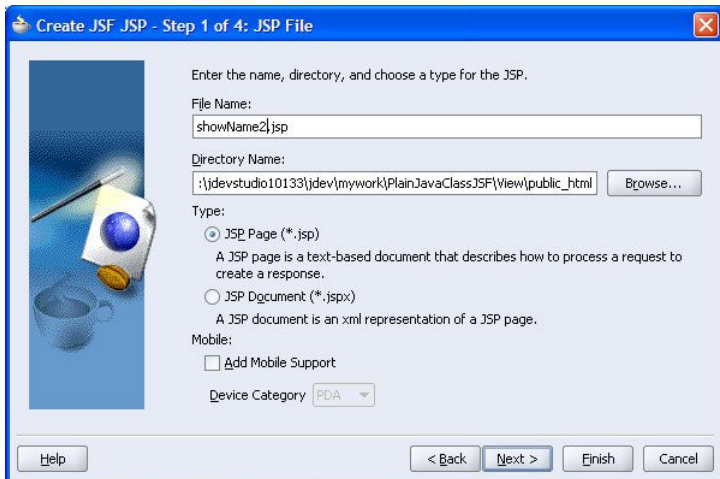
- c. In the *Create JSF JSP* wizard, click *Next*.



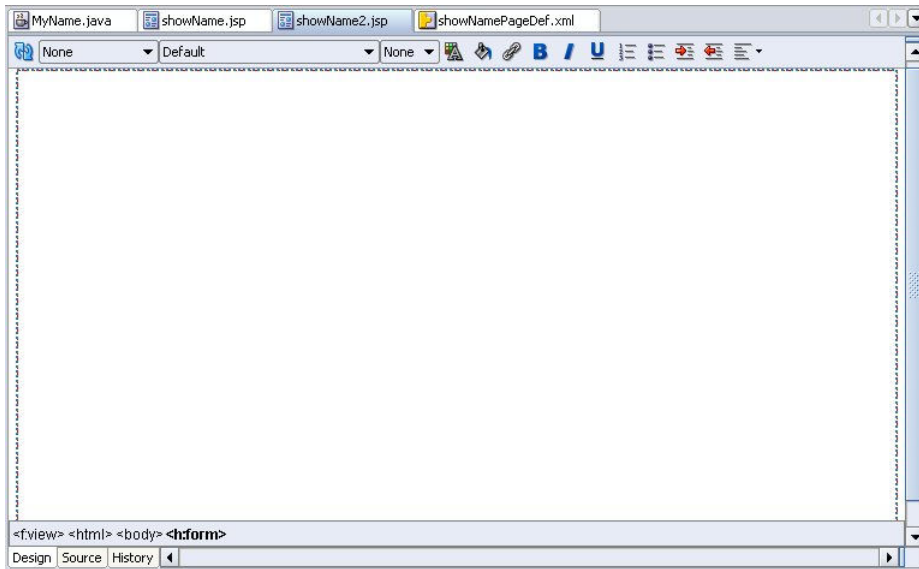
d. Choose *Servlet 2.4*, click *Next*.



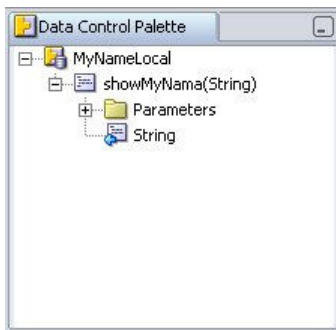
e. Enter **showName2.jsp** for *File Name:* and click *Finish*.



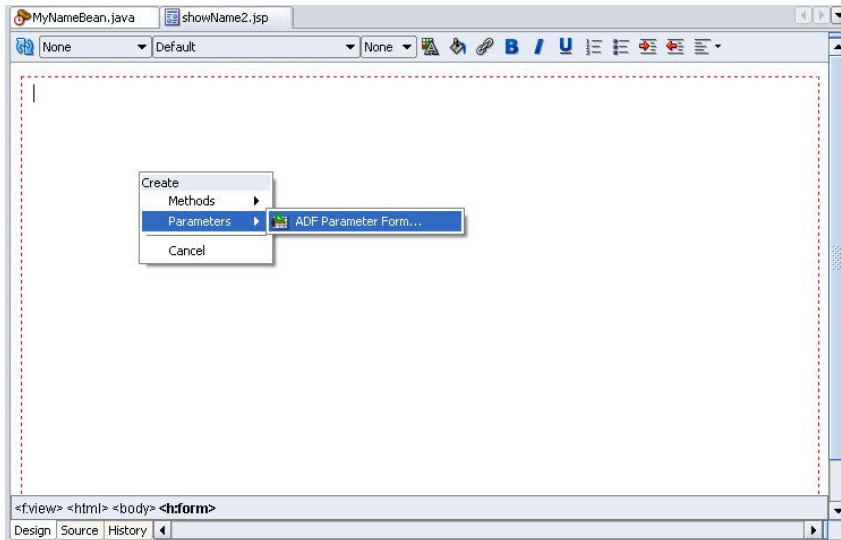
f. See the outcome.



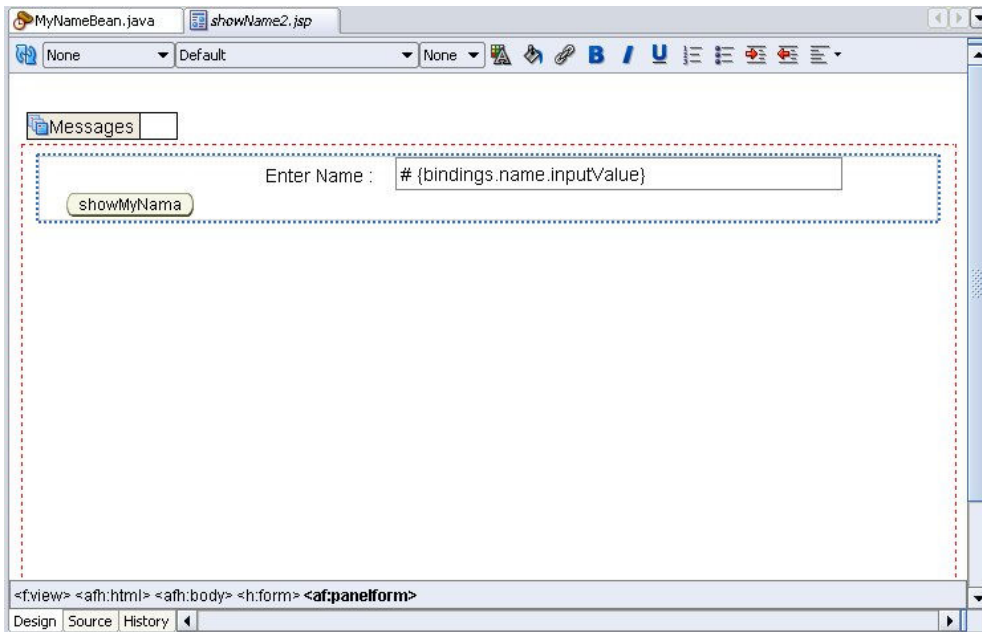
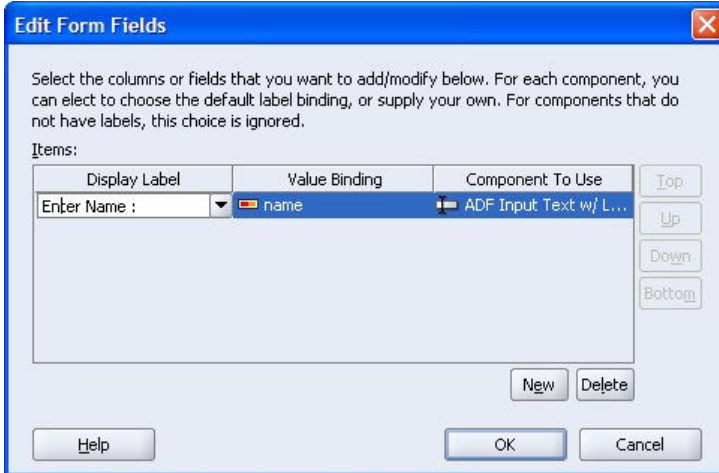
g. Inside *Data Control Palette*, expand **showMyName(String)**.



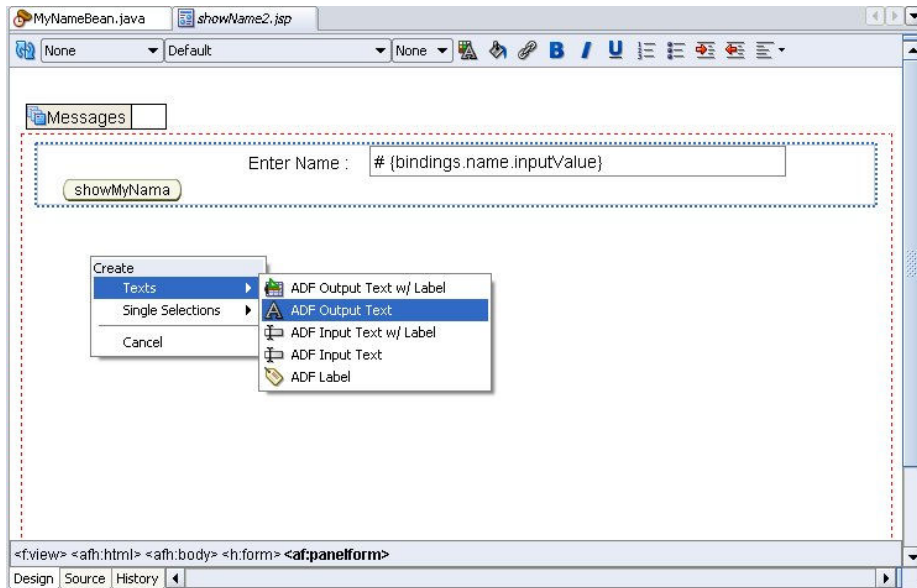
h. Click **showMyName(String)** from *Data Control Palette*, drag & drop onto **showName2.jsp** design view. Click *ADF Parameter Form...*



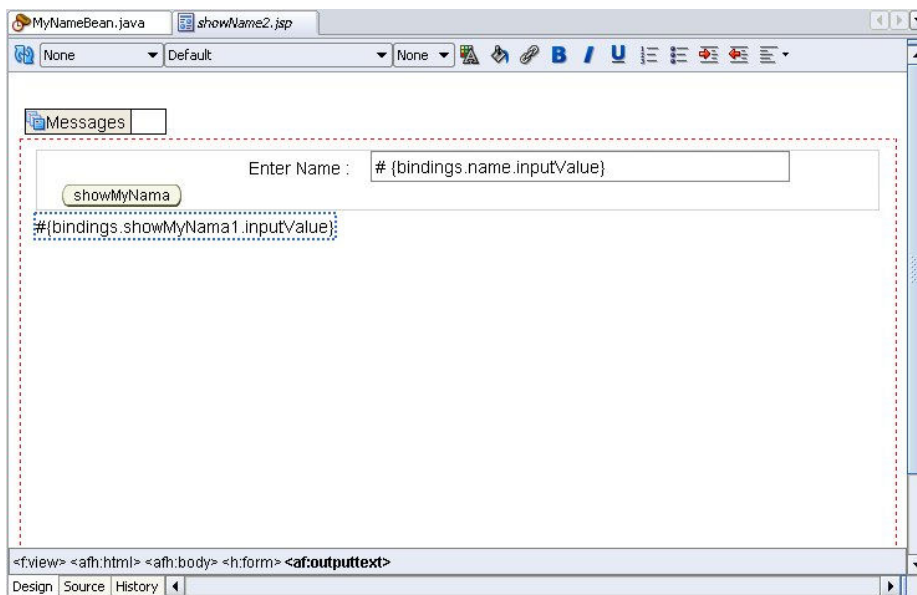
- i. On *Edit Form Fields* dialog, under column *Display Label*, enter “**Enter Name :**”, then click *OK*. Click *OK* again.



- j. Choose String, drag & drop onto **showName2.jsp** design view. Choose *Text*, click *ADF Output Text*.

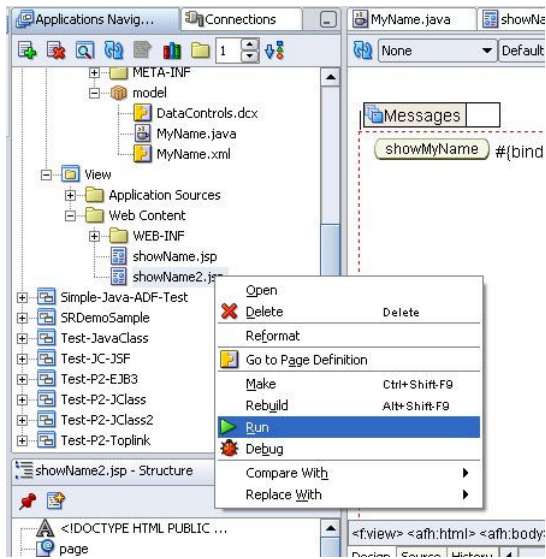


k. See the outcome.

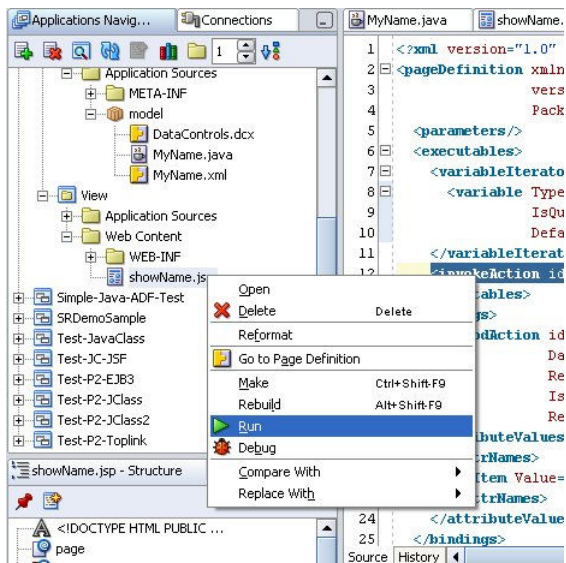


5. Test and run JSF file.

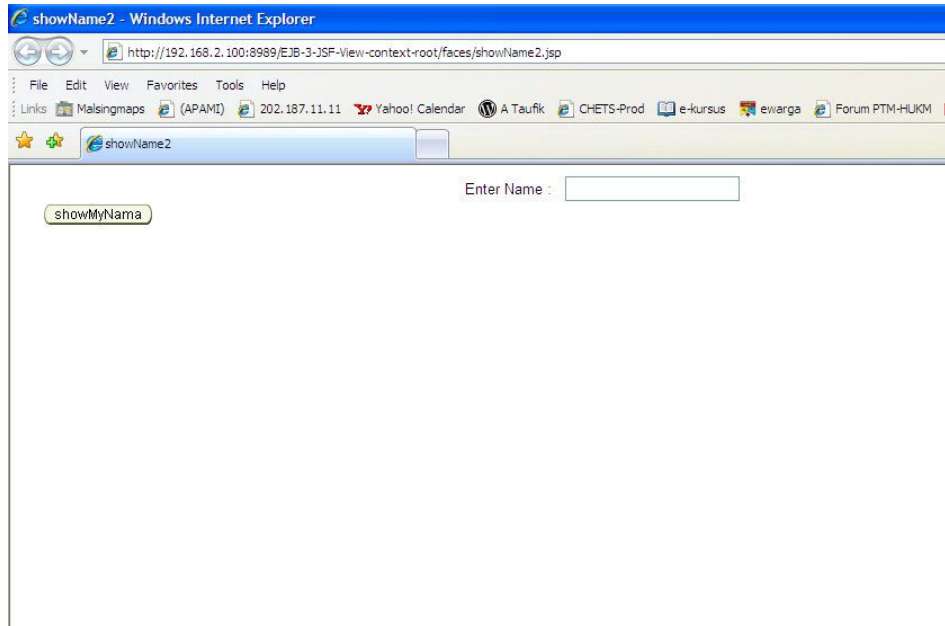
a. Find file **showName2.jsp** inside **View** project folder.



b. Right click **showName.jsp**, and click *Run*.



c. See the outcome.



d. Enter your name and click button **showMyName**

